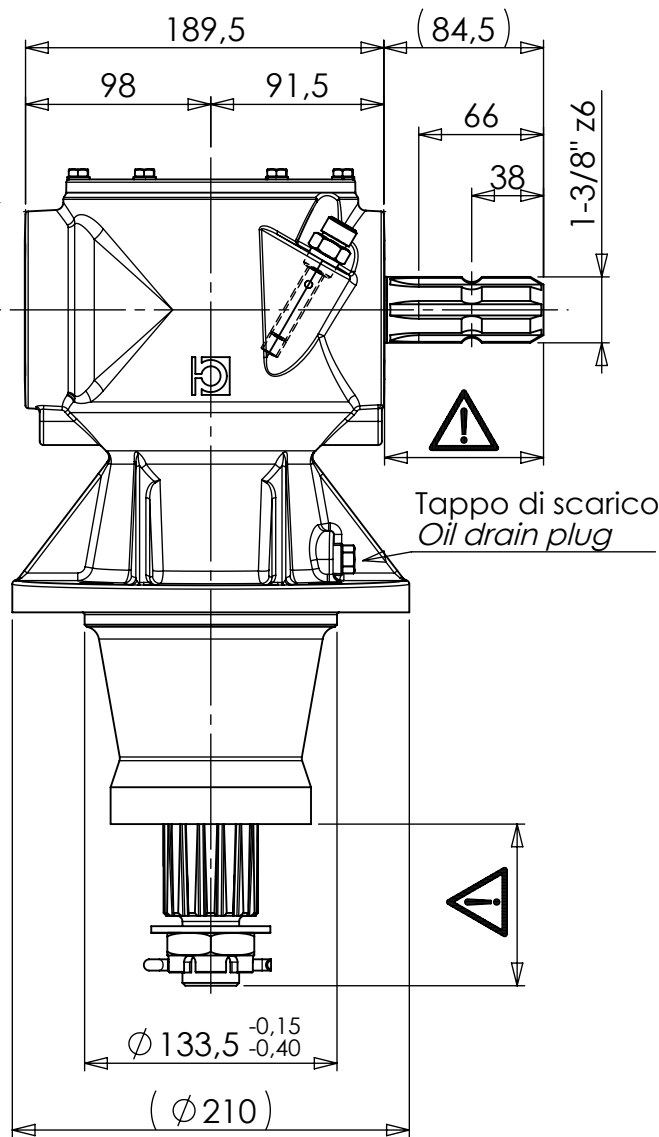
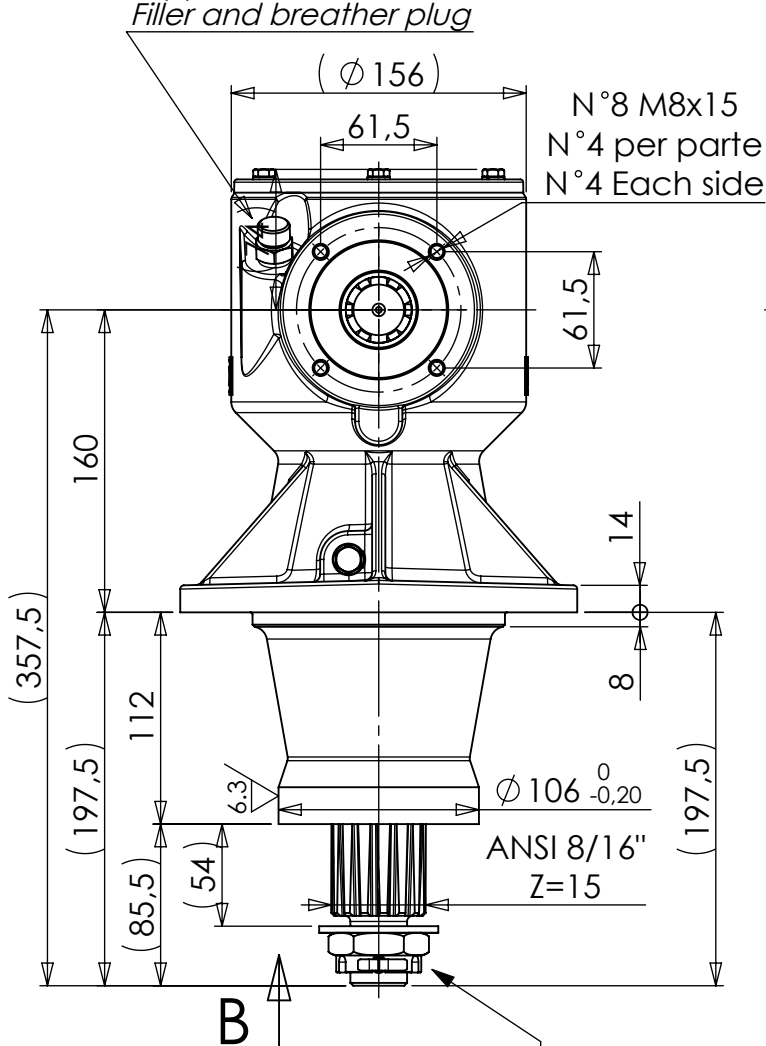


Tappo di carico e sfiato
Filler and breather plug



Tappo di scarico
Oil drain plug

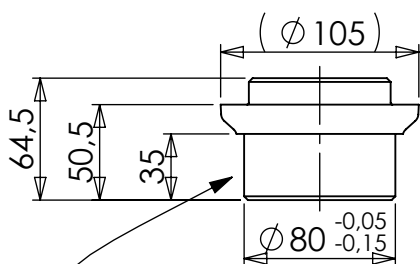
Verniciatura / Painting

DESIGNAZIONE CLIENTE Customer Designation	Nero / Black RAL 9005
RIF. SPECIFICHE INTERNE B&P Specifications Ref.	STBP02-V STBP06-V
VEDI SCHEMA / See Schema	NY30500006
Solo le specifiche B&P sono completamente soddisfatte Only B&P specifications are completely satisfied	

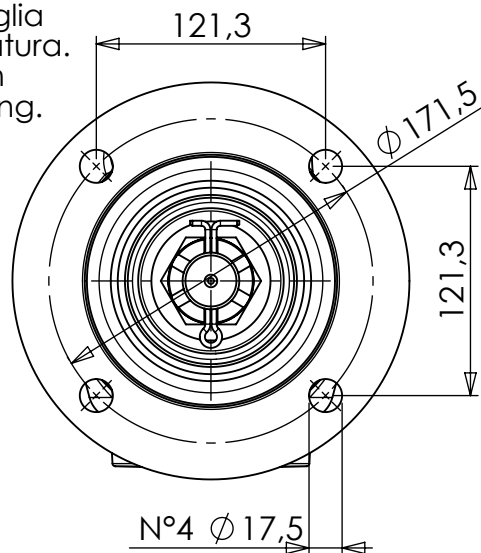
Dado, rondella e copiglia
montati dopo la verniciatura.
Nut, Washer and pin
assembled after painting.

WARNING!

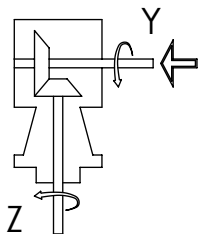
ROTATING SHAFTS MARKED
ARE NOT SHIELDED.
ANY SHAFT AND COUPLING NOT
GUARDED BY LOCATION MUST BE
SHIELDED BY AN INTERACTIVE
GUARDING SYSTEM.
BONDIOLI & PAVESI DECLINES
RESPONSIBILITY IF PROPER GUARDS
ARE NOT PROVIDED AND MAINTAINED.



MOZZO 298405000 non verniciato
da ordinare e spedire separatamente.
Not painted HUB 298405000 supplied
and shipped separately.



MONTAGGIO / GEAR ARRANGEMENTS



RAPPORTO / RATIO

1:2.15

TIPO / TYPE

3050

CLIENTE / CUSTOMER

3600502 Dani-Tech A/S

GIRI IN ENTRATA / INPUT SPEED

540

PESO / WEIGHT (Kp)

23.2

DISEGNATO / DESIGNED BY

Galeotti F.

POTENZA IN ENTRATA / INPUT POWER

40 CV - 29 kW

STUDIO / CONCEPT DRAWING

DATA / DATE

19-10-2022

RIF. CLIENTE / CUSTOMER REF.

TIPO DI MACCHINA / TYPE OF IMPLEMENT

BONDIOLI & PAVESI

CODICE / CODE

S3050215009

REV.

0